

Purifiner Controller TF 5060C

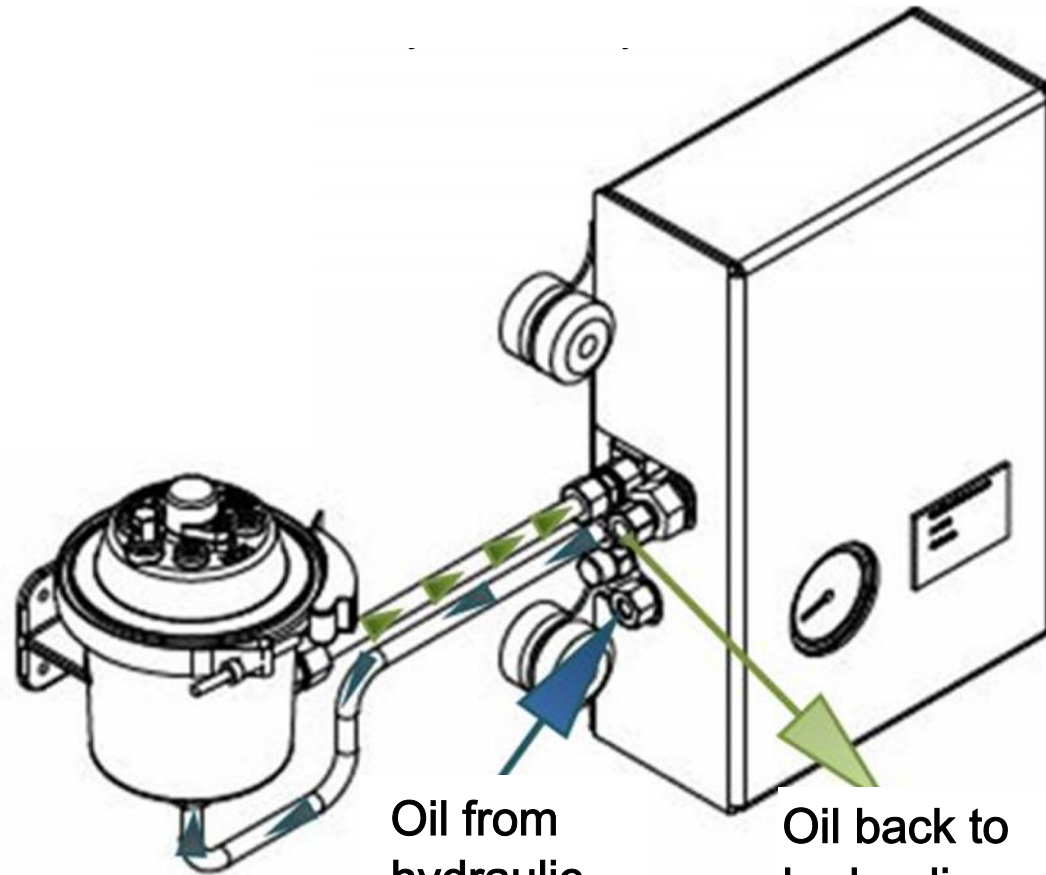
For 24v Pressurised Systems



Before



After



Oil from
hydraulic
system.
Max 200 bar.

Oil back to
hydraulic
system.
Backpressure
up to 3 bar.

Hitachi 870 LCH



NASTA[®]

Torstein Strømmen
Service avtaler/Kundeoppfølging
NASTA AS



Arnfinn Mathisen

Verksted Leder

Nordic Crane Kynningsrud AS